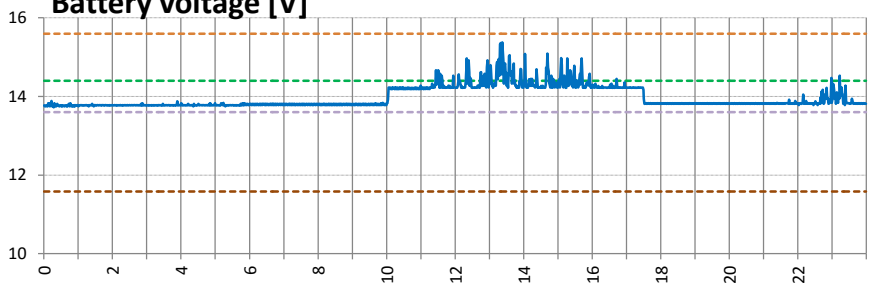


## Battery voltage [V]



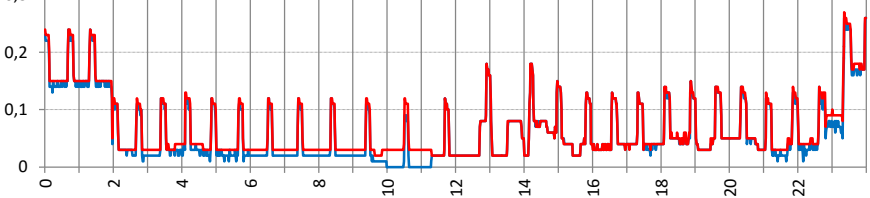
- Equ {1164}
- Abs {1156}
- Float {1140}
- LVD {1108}
- U-Bat Min [V]
- U-Bat Max [V]
- U-Bat Avg [V]

### Battery voltage [V]

Max	15.4	13:22:00
Avg	14	
Min	13.7	00:01:00

- Zoom U-Bat Max
- Zoom U-Bat Min
- Show U-Bat Min/Max

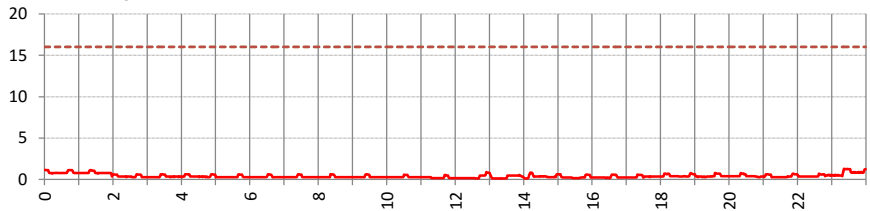
## Battery current [A] and Power [kW]



- I-Bat Avg [A]
- P-ACin Avg [kW]
- P-ACout Avg [kW]

Show I-Bat Avg

## AC-Input current [A]



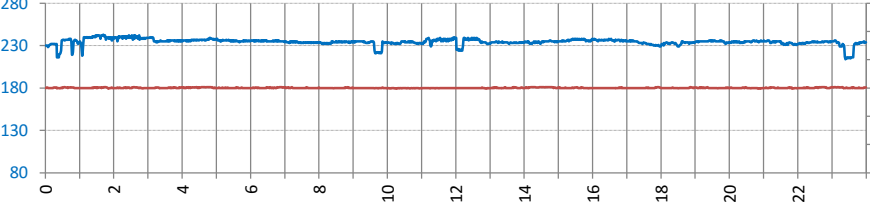
- Max source AC current 1 {1107}
- Max source AC current 2 {1567}
- I-ACin Avg [A]

### AC-Input current [A]

Max	1.3	23:21:00
Avg	0.4	
Min	0.1	12:35:00

- Zoom I-AC-In Max
- Zoom I-AC-In Min

## AC - Input : voltage [V] and frequency [Hz]

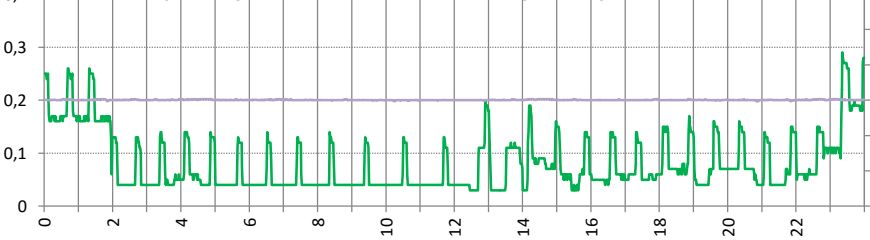


- U-ACin Avg [V]
- F-ACin Avg [Hz]

## Operating state

- No data
- Off
- Standby
- Charger
- Inverter
- Boost

## AC - Output : power [kVA] and frequency [Hz]



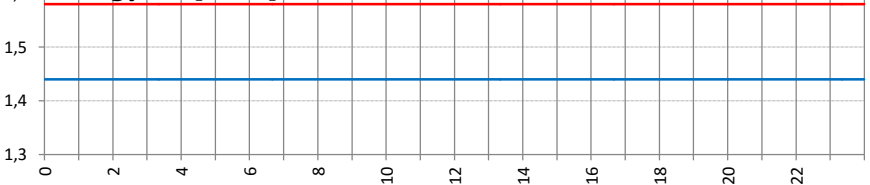
- P30 [kVA]
- Pnom [kVA]
- P-ACout Max [kVA]
- P-ACout Avg [kVA]
- F-ACout Avg [Hz]

### Power AC-Output [kVA]

Max	0.4	13:30:00
Avg	0.1	
Min	0	12:27:00

- Zoom P-Out Max
- Zoom P-Out Min
- Show P-ACout Max

## Energy AC [kWh]



- Energy AC-Input [kWh]
- Energy AC-Output [kWh]

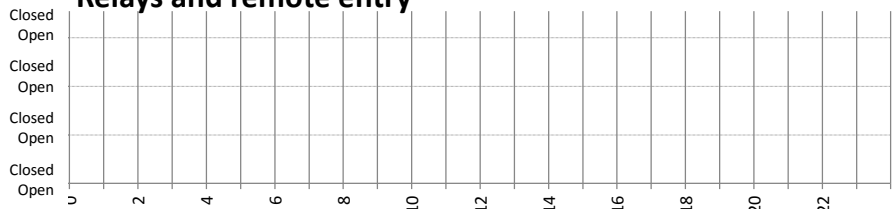
### Energy AC-Input [kWh]

Sum	1.44
-----	------

### Energy AC-Output [kWh]

Sum	1.58
-----	------

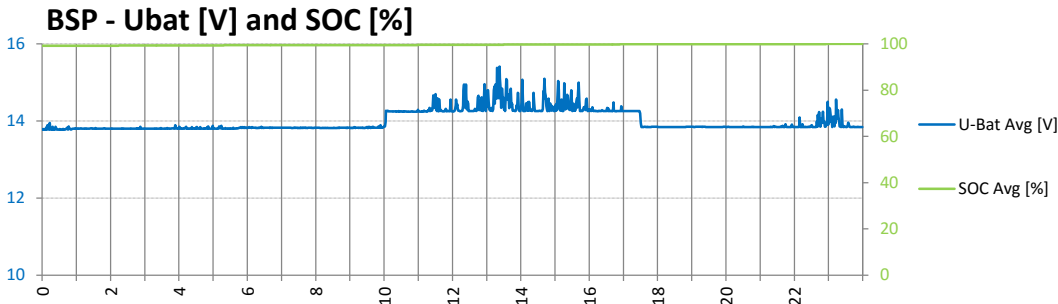
## Relays and remote entry



- Transfert
- AUX1
- AUX2
- Remote entry

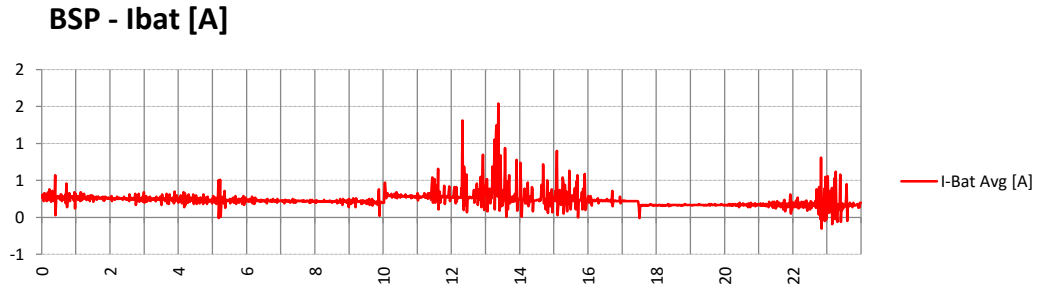
# BSP - System power

31-1-2016

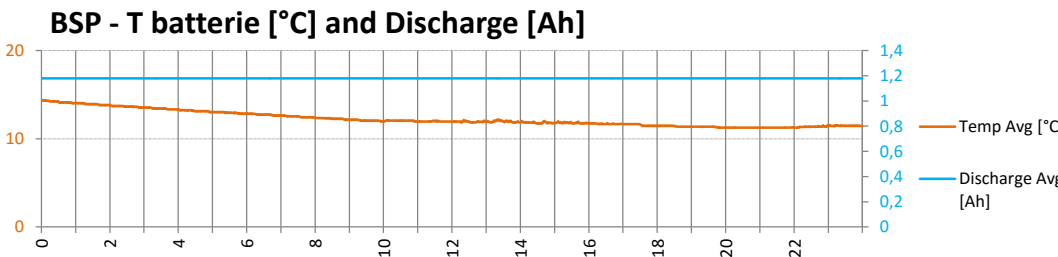


BSP - Ubat [V] and SOC [%]		
Max	15.4	13:22:00
Avg	14	
Min	13.8	00:00:00

BSP - SOC [%]		
Max	100	22:56:00
Avg	99.6	
Min	99.2	00:00:00

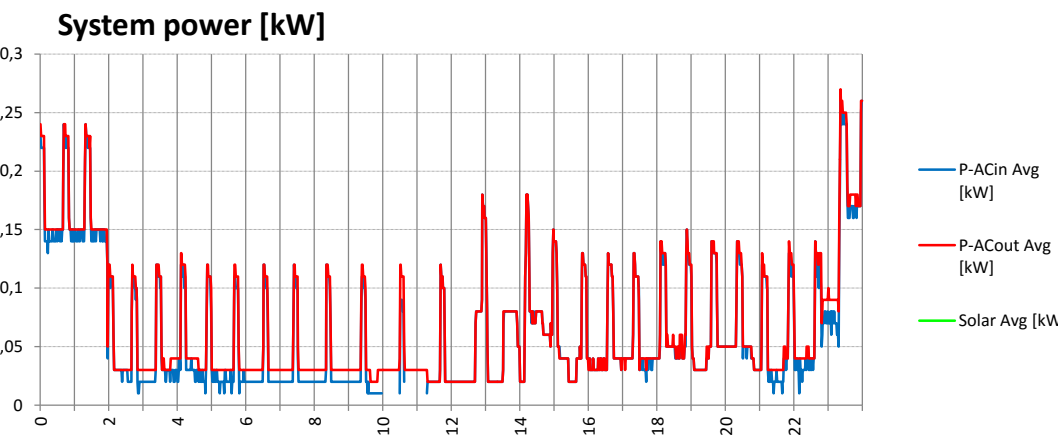


BSP - Ibat [A]		
Max	1.5	13:22:00
Avg	0.2	
Min	-0.2	22:50:00



BSP - T batterie [°C]		
Max	14.3	00:00:00
Avg	12.2	
Min	11.3	19:51:00

BSP - Discharge [Ah]		
Max	1.2	
Avg	1.2	
Min	1.2	



### Infos system XTENDER

L1-1:XTS 900-12 (230-3) Soft:1.5.30 Cmd:1.0 Pwr:1.0 Params:532 FID:36FA8E98

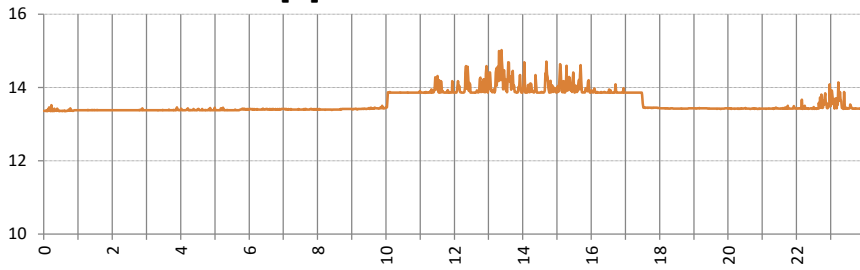
### Infos system VarioTrack


### Infos system RCC, BSP and Xcom MS

1:VarioTrack Soft:1.5.28 Cmd:3.0 Pwr:1.0 Params:308 FID:38787771
1:RCC-03 Soft:1.5.68 Cmd:1.0 FID:3C9656C1
1:BSP Soft:1.5.8 Cmd:0.4 Params:60 FID:39D077B2 (610Ah)



VarioTrack-Ubat [V]

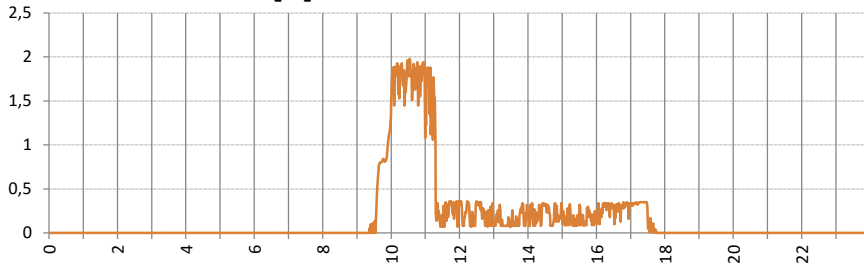


- 6
- 5
- 4
- 3
- 2
- 1

VarioTrack-Ubat [V]

6	
5	
4	
3	
2	
1	13.6

VarioTrack-Ibat [A]

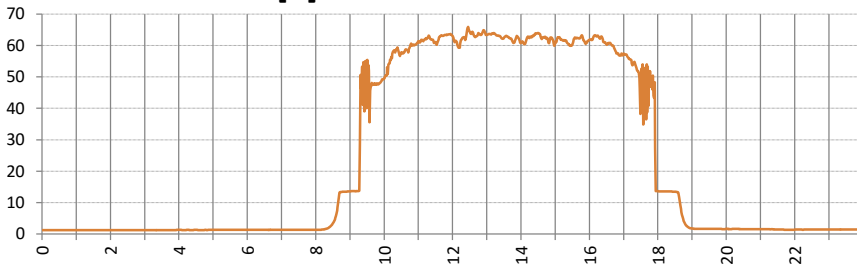


- 6
- 5
- 4
- 3
- 2
- 1

VarioTrack-Ibat [A]

6	
5	
4	
3	
2	
1	0.2

VarioTrack-U PV [V]

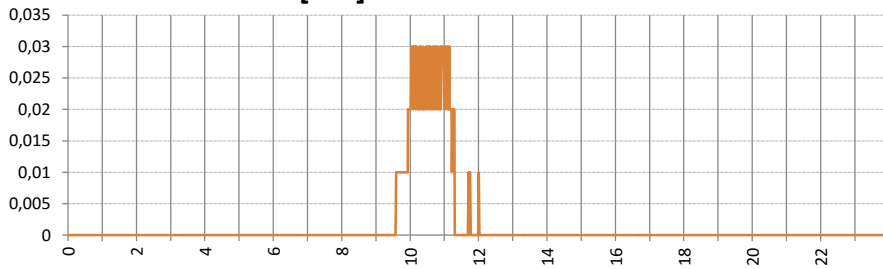


- 6
- 5
- 4
- 3
- 2
- 1

VarioTrack-U PV [V]

6	
5	
4	
3	
2	
1	22.9

VarioTrack-P PV [kW]



- 6
- 5
- 4
- 3
- 2
- 1

VarioTrack-P PV [kW]

6	
5	
4	
3	
2	
1	0